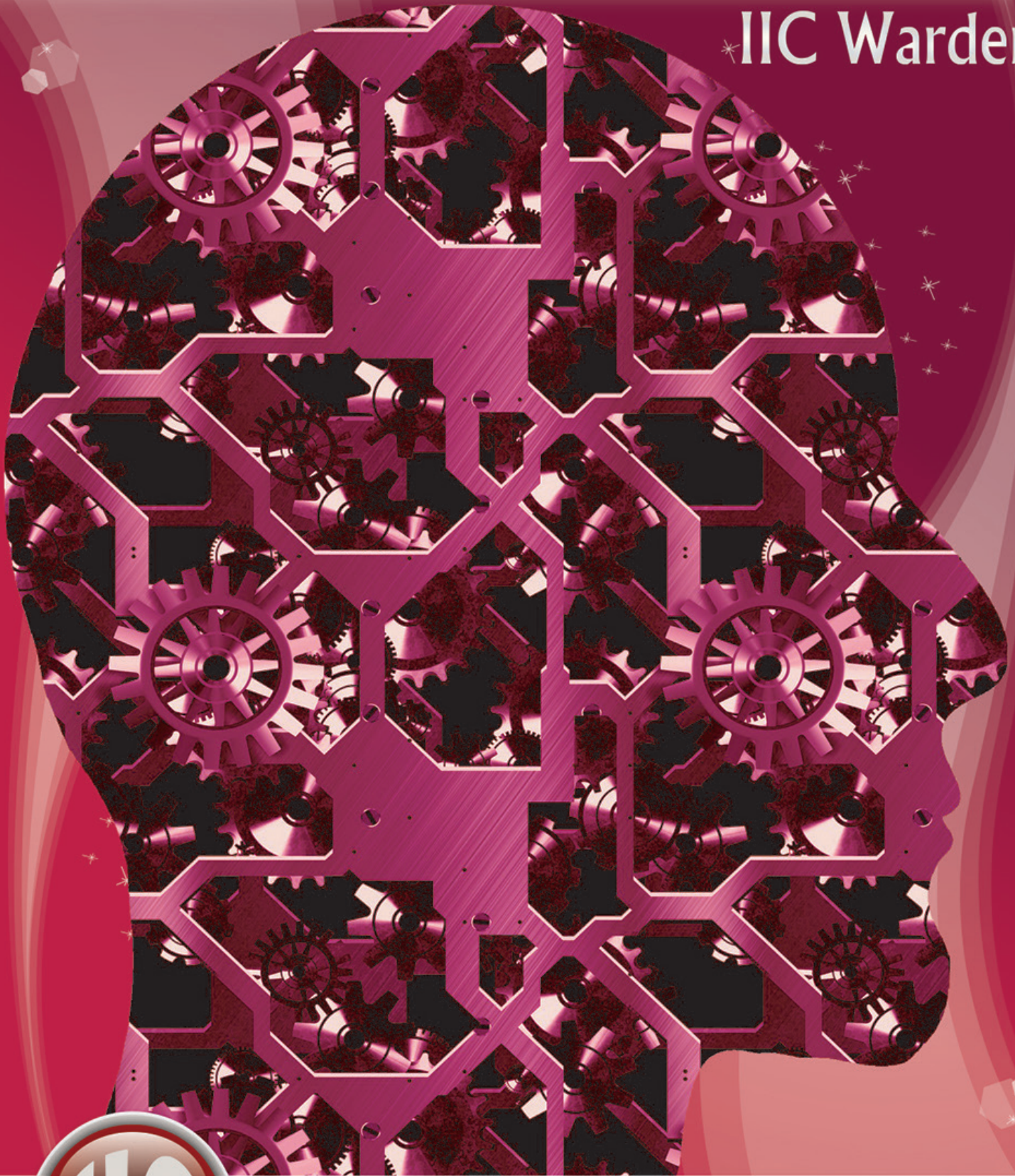


# What's Your Inventory IQ?

\*IIC Warden



a division of  SEAGA

*Intelligent Inventory Control*  
700 Seaga Drive Freeport IL 61032  
815.297.9500 ext. 128 [iic@seaga.com](mailto:iic@seaga.com)  
visit: [intelligentinventorycontrol.com](http://intelligentinventorycontrol.com)

Eliminate human error from stock control and create a usage-based environment that can reduce waste and increase productivity. Seaga's industrial vending system Intelligent Inventory Control or IIC, allows companies to stock what they need when they need it, and in the location they need it providing transparency on all levels utilizing a reporting system capable of automatic user defined critical inventory escalation alerts.

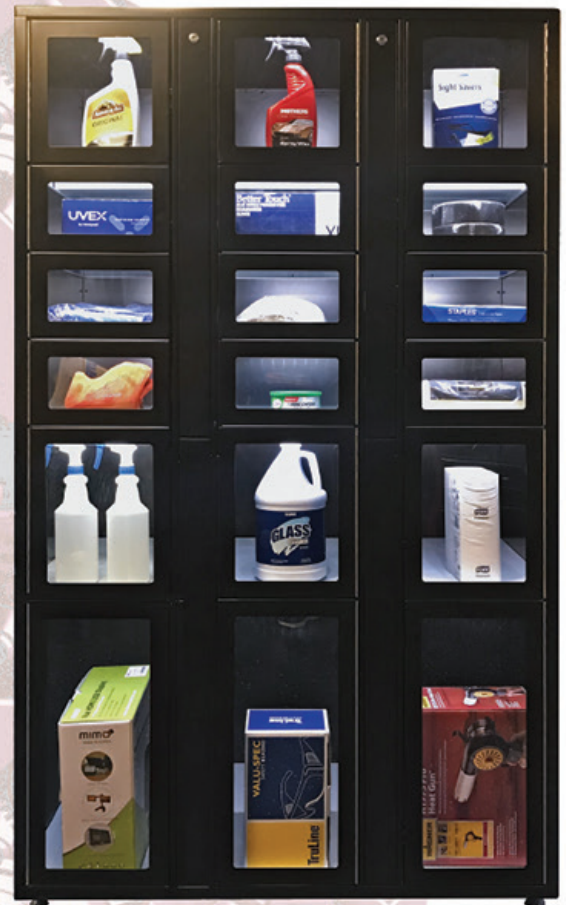
Outfitted with LED lighting and boasting 18 secure field adjustable compartments, the Warden is a perfect addition to the IIC family. With check-in/check-out capabilities and a robust cloud-based software package that completely integrates with reporting features, the Warden provides the clear and conclusive accounting of supply usage enabling the precise forecasting and reduction of inventory levels by 50% or more. Seaga's industrial vending management system optimizes productivity by reducing inventory expenditures, monitoring consumable inventory, and providing 24/7 access to MRO tools and a variation of other consumable resources in manufacturing, construction, safety and PPE equipment, as well as office, and medical supplies.

Like all of Seaga's industrial vending machines, the IIC Warden engages in an IoT sensibility allowing it to securely log, track, sum, report, and communicate inventory usage data within a satellite of machines positioned tactically throughout the work environment or as a standalone

# IIC Warden

## IIC Warden Features

- Security for Up to 18 Items
- Customizable for Product Size Flexibility
- Large Viewable Area
- Brilliant LED Lighting
- Auxiliary with IIC SightGuard or Standalone or Multiple Units
- Direct Connections for Power and Ethernet
- Knock outs for Accessory Power Strips (power strips not included)
- Check Out/Check In Capability



Dimensions:  
72" h x 40" w x 24" d  
410 lbs.

Top 3 Lockers 11.5" h X 13.25" w  
Top Middle 9 Lockers 5.96" h X 13.25" w  
Bottom Middle 3 Lockers 12.92" h X 13.25" w  
Bottom 3 Lockers 22.41" h X 13.25" w

Custom Setups Available for Most Applications



a division of 

*Intelligent Inventory Control*  
700 Seaga Drive Freeport IL 61032  
815.297.9500 ext. 128 [iic@seaga.com](mailto:iic@seaga.com)  
visit: [intelligentinventorycontrol.com](http://intelligentinventorycontrol.com)